

Notizen

Agenda

• Bayes (μ - Prinzip)

• Bernoulli - Prinzip

• Entscheidungsbaum

Notizen

Bayer, Thomas (1701-1761)

Bernoulli, Daniel (1700-1782)



Notizen

konvexe

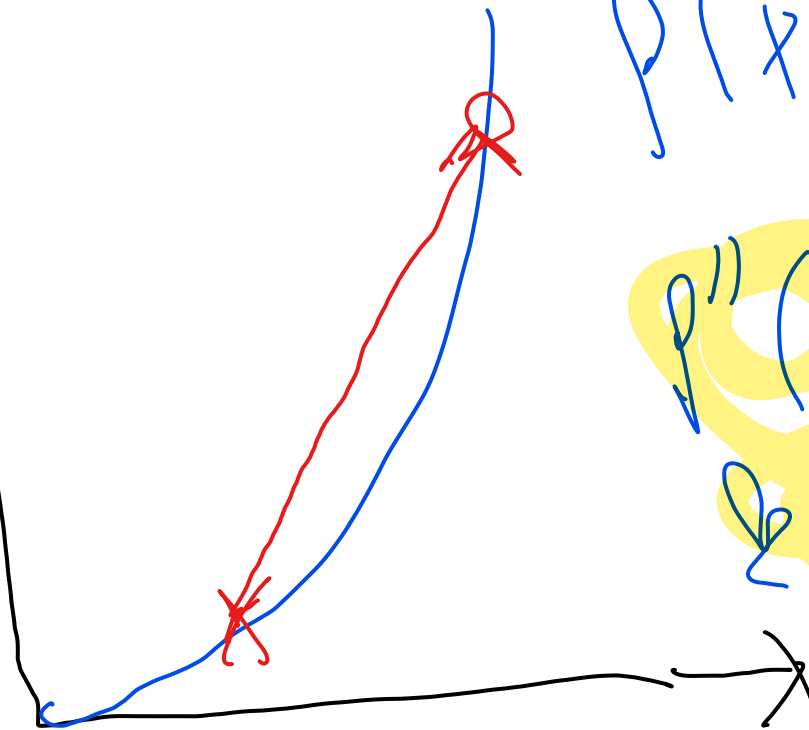
Konvexität

linkes Gebirge

$$P(x) = x^2 \quad P'(x)$$

→ Sekante

Sekante oberhalb



$$P'(x) = 2x$$

$$P''(x) = 2 > 0$$

konvex

Notizen

konkrete Verringerung
rechtlich gebräuchlich

$$f(x) = \sqrt{x}$$

$f(x)$



Schne unklar, da

Notizen

$$f(x) = \sqrt{x} = x^{1/2}$$

$$f'(x) = \frac{1}{2} x^{-1/2}$$

$$f''(x) = \frac{1}{4} x^{-3/2}$$

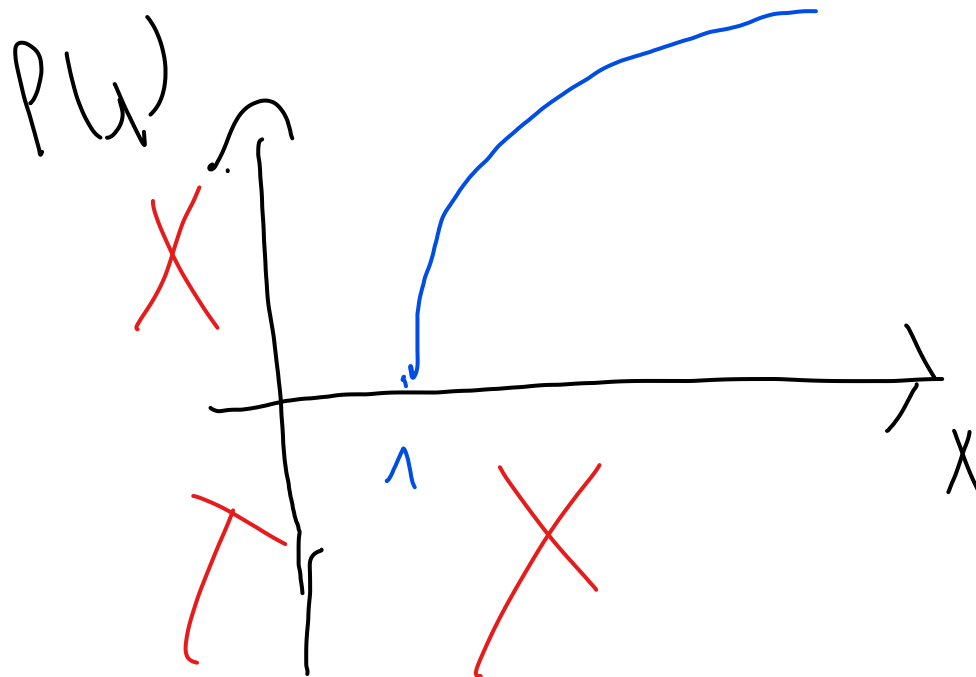
$$f(x) > 0$$

$$f''(x) < 0$$

Notizen

$$f(x) = \ln(x)$$

Funktion des natürlichen
Logarithmus



konkav
mit
steil

Notizen

Notizen

Notizen

Notizen

Notizen

Notizen

Notizen

Notizen

Notizen

Notizen

Notizen

Notizen

Notizen

Notizen

Notizen

Notizen

Notizen

Notizen

Notizen

Notizen

Notizen

Notizen

Notizen

Notizen

Notizen

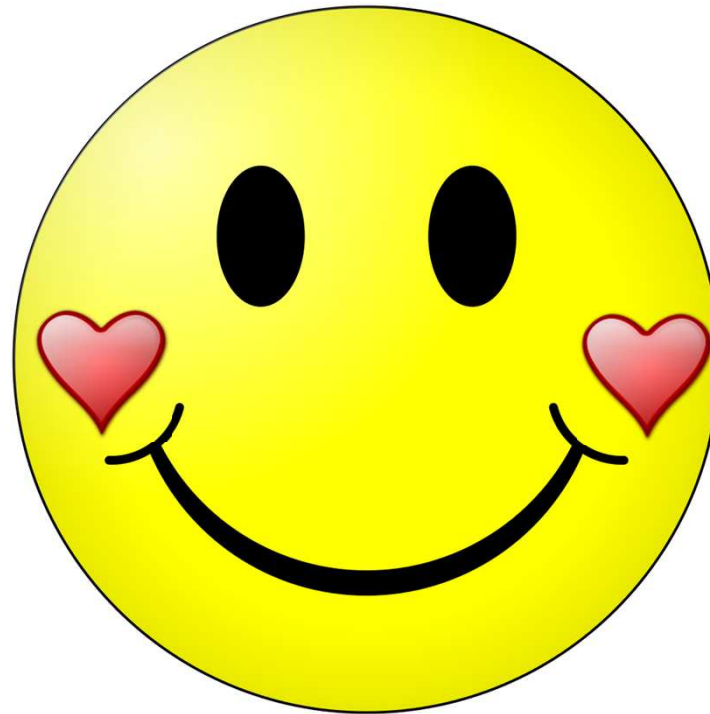
Notizen

Notizen

Notizen

Notizen

Notizen



Einen schönen Tag ...